

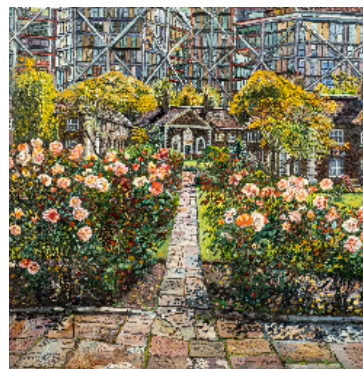
MSM061

Melissa Scott-Miller RBA RP NEAC (born 1959)
Hopton Street Almshouses, Summer 2023

Signed with initials and dated 23
Signed and inscribed with title on reverse
Oil on canvas
31 ½ x 31 ¼ inches (80 x 79.375 cm)

Exhibited

'Melissa Scott-Miller: En Plein Air', Chris Beetles Gallery, London, October-November 2024, no 8;
NEAC Annual Exhibition, London, June 2025

**Additional Notes**

'This one is near where my daughter and grandson live and I was always going past there near the Tate. I just thought it was so fantastic. They've done such an incredible job with the roses and it also looked so strange with the almshouses with the blocks of flats behind. It's actually quite a big painting, I don't know how I managed to take it on the train. At the time there was this guy making a documentary about the almshouses, and it was so good. He's got me at the beginning of it, painting away. But it's just so interesting because all the people in the almshouses, the flats grew up around them. So suddenly, there was all these million-pound flats behind them. I got really friendly with all the people who lived there and I went to the premiere of the documentary...'

Melissa Scott-Miller, 2025

£6,500.00

MSM098

Melissa Scott-Miller RBA RP NEAC (born 1959)
Hampstead

Signed, inscribed with title and dated 2013 on reverse
Oil on canvas
30 x 40 inches (76.25 x 101.625 cm)

Exhibited

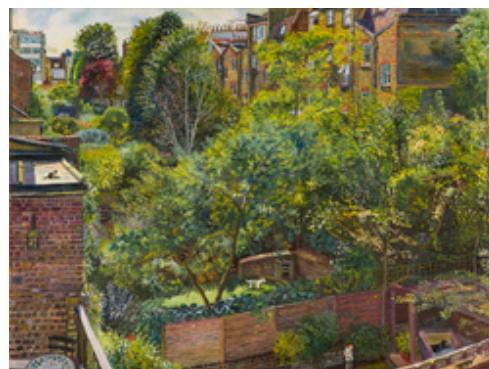
'Melissa Scott-Miller: En Plein Air', Chris Beetles Gallery, London, October-November 2024, no 9

Additional Notes

'Some lovely people who lived in Hampstead commissioned me to do the view from their house, and it looked right over the back of Flask Walk. But then on the balcony I looked to the left and saw this view, which I really loved. They were going away and said I could stay there for a month or so to do another painting. Later on, I decided to put [my daughter] Cordi holding baby Avery, because it was around that time. And [my dog] Joey and the little cat. It was really, really bright sunshine. And it looked fantastic.'

Melissa Scott-Miller, 2025

£4,500.00



MSM101

Melissa Scott-Miller RBA RP NEAC (born 1959)

Generations Enjoy; The Back Garden in Spring

Signed with initials and dated 24

Oil on canvas

47 ½ x 39 inches (120.625 x 99 cm)

Exhibited

'The New English Art Club', Mall Galleries, London, June 2024;

'Melissa Scott-Miller: En Plein Air', Chris Beetles Gallery, London, October-November 2024, no 10

**Additional Notes**

'It's quite sad because my neighbour has that garden [to the right]. He had all these pots of camellias and now he's given them all away. I think he feels he's too old, so he doesn't want to do the garden anymore – but it was absolutely incredible. It was at that time I was looking after [my grandson] Avery one day a week. On my days looking after him, when he eventually had his nap, I did a little drawing of him. So I painted myself drawing Avery and it was shortly after I finished the painting that he actually stopped having naps. So at the time I called it *Avery's Springtime Nap*.'

Melissa Scott-Miller, 2025

£12,500.00

MSM112

Melissa Scott-Miller RBA RP NEAC (born 1959)

The Rose Garden, Holland Park, June 2024

Signed with initials and dated 24

Oil on canvas

24 x 30 inches (61 x 76.25 cm)

Exhibited

'Melissa Scott-Miller: En Plein Air', Chris Beetles Gallery, London, October-November 2024, no 20

**Additional Notes**

'Finished this painting in Holland Park yesterday, of the rose garden there with a heron that always enjoyed a morning stroll around the gardens. My second painting there so far this summer...'

Melissa Scott-Miller, June 2024

£5,500.00

ARL3794

Melissa Scott-Miller RBA RP NEAC (born 1959)

Holland Park Spring

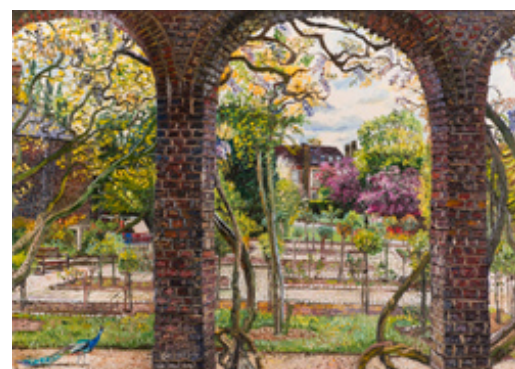
Signed, inscribed with title and dated 2021 on reverse

Oil on canvas

19 ½ x 27 ½ inches (49.5 x 69.875 cm)

Exhibited

'Melissa Scott-Miller: En Plein Air', Chris Beetles Gallery, London, October-November 2024, no 18

**Additional Notes**

'I painted here with my Heatherley's students, and it was spring. You can see the beginning of the Wisteria. But I was mostly focusing on those May trees. I love the bricks cutting into the view. And the peacock really was there the whole time, stomping around!'

Melissa Scott-Miller, 2025

£4,000.00

MSM146

Melissa Scott-Miller RBA RP NEAC (born 1959)

Brompton Cemetery, Autumn

Signed with initials and dated 24

Signed, inscribed with title and dated 2024 on reverse

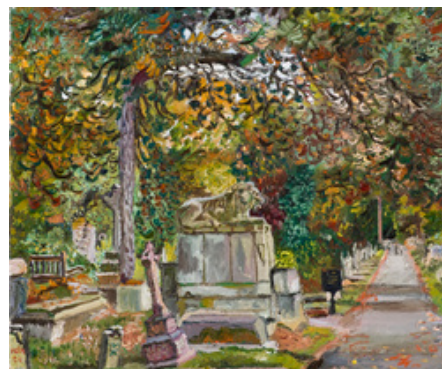
Oil on canvas

10 x 12 inches (25.375 x 30.5 cm)

Exhibited

'Melissa Scott-Miller: En Plein Air', Chris Beetles Gallery, London, October-November 2024

Royal Society of British Artists, Annual Exhibition, Mall Galleries, London, 26 February-8 March 2025

**Additional Notes**

'Finished this painting today in Brompton Cemetery with my Heatherley's urban landscape course, such a peaceful place with beautiful trees...'

Melissa Scott-Miller, October 2024

The lion marks the grave of John 'Gentleman' Jackson (1769-1845), champion bare-knuckle fighter and boxing teacher to Lord Byron. The memorial was paid for by friends and admirers of John after his death.

£950.00

MSM147

Melissa Scott-Miller RBA RP NEAC (born 1959)

Wet Patio in Mount Street Gardens

Signed with initials and dated 24

Oil on canvas

19 ½ x 19 ¾ inches (49.5 x 50.125 cm)

Exhibited

'Melissa Scott-Miller: En Plein Air', Chris Beetles Gallery, London, October-November 2024

**Additional Notes**

'This one I've always really liked, because I do a lot of paintings in Mount Street Gardens, and I've seen this place where you can go and sit by the patio. I've always wanted to paint that. It was really raining, and it was shortly after Chris Beetles Gallery had given me the umbrella, so I was thinking I can paint anything now! And it did look so good, with the colours of the paving stones. But I also thought it made a really good composition. It was empty because of the rain – apart from the gardener, who was coming to say hello to me every now and then!'

Melissa Scott-Miller, 2025

£3,000.00

MSM148

Melissa Scott-Miller RBA RP NEAC (born 1959)

Hérons, Holland Park

Signed with initials and dated 24

Oil on canvas

16 x 20 inches (40.625 x 50.75 cm)

Exhibited

'Melissa Scott-Miller: En Plein Air', Chris Beetles Gallery, London, October-November 2024

Additional Notes

'Enjoyed a lovely day with our urban landscape Heatherley's class. Finished this small painting of the pond in Holland Park, with wonderful autumn colours and lovely herons...'

Melissa Scott-Miller, October 2024

£2,750.00

**MSM184**

Melissa Scott-Miller RBA RP NEAC (born 1959)

Wisteria, Cheyne Walk

Signed with initials and dated 25

Oil on canvas

20 x 24 inches (50.75 x 61 cm)

Exhibited

'Chris Beetles Summer Show 2025', Chris Beetles Gallery, London, June-September 2025, no 155;

'Melissa's London', Chris Beetles Gallery, London, October 2025

Additional Notes

'I've always loved that view of Cheyne Walk, I love those houses. In fact the artist Val Archer sent me a picture of a famous painting, a really beautiful painting, and I think it's actually of this house. And I thought, I'd love to paint that, and the Wisteria was just coming out, and it just looked really amazing. There was quite a lot of activity, deliveries and stuff on the road, so I had to wait to do the pavement. It's already a famous place, where lots of poets and artists have lived. I always feel like they might be looking down on me...'

Melissa Scott-Miller, 2025

£4,000.00

**MSM190**

Melissa Scott-Miller RBA RP NEAC (born 1959)

Holland Park Dutch Garden

Signed with initials and dated 25

Oil on canvas

16 x 20 inches (40.625 x 50.75 cm)

Exhibited

'Melissa's London', Chris Beetles Gallery, London, October 2025

Additional Notes

'Holland Park, the walled garden. Caught the tulips last week and finished it this Friday with our lovely Heatherley's School of Art group...'

Melissa Scott-Miller, May 2025

£2,750.00



MSM201

Melissa Scott-Miller RBA RP NEAC (born 1959)

The Artist's Front Garden, May 2025

Signed with initials and dated 25

Oil on canvas

16 x 20 inches (40.625 x 50.75 cm)

Exhibited

'Melissa's London', Chris Beetles Gallery, London, October 2025

Additional Notes

'The view out of my window; I've painted the elderflower bush many times but this year it's particularly bountiful. I started this a few days ago, there was a sign about parking restrictions and I was worried about my son's car as he was away. They didn't move his car but now there's a big metal bike shed just out of view, and lots of Lime bikes next to it...'

Melissa Scott-Miller, June 2025

£1,750.00

**MSM202**

Melissa Scott-Miller RBA RP NEAC (born 1959)

A Corner of St James's Square

Signed with initials and dated 25

Oil on canvas

16 x 20 inches (40.625 x 50.75 cm)

Exhibited

'Melissa's London', Chris Beetles Gallery, London, October 2025

Additional Notes

'Finished this small painting in St James's Square, had a lovely day. I saw the Soutine and British painting at Piano Nobile Gallery then saw Cedric Morris at Philip Mould Gallery, then went back to Chris Beetles Gallery where there are so many great paintings and drawings to see, and went out painting with Jack Russell in Mount Street Gardens...'

Melissa Scott-Miller, June 2025

£2,750.00

**MSM222**

Melissa Scott-Miller RBA RP NEAC (born 1959)

St Pancras Lock, King's Cross

Signed with initials and dated 25

Oil on canvas

16 x 20 inches (40.625 x 50.75 cm)

Exhibited

'Melissa's London', Chris Beetles Gallery, London, October 2025

Additional Notes

'Finished this small painting of St Pancras Lock yesterday evening, a lovely place with lots of wildlife. I always wanted to paint it and it seems more accessible now with the King's Cross regeneration. It's like a totally different place but this old lock keeper's cottage is still the same.'

Melissa Scott-Miller, August 2025

£2,750.00



MSM223

Melissa Scott-Miller RBA RP NEAC (born 1959)

Summer in Mount Street Gardens

Signed with initials and dated 25

Oil on canvas

19 ½ x 27 ½ inches (49.5 x 69.875 cm)

Exhibited

'Melissa's London', Chris Beetles Gallery, London, October 2025

Additional Notes

'This was in the summer during the heat wave. There are actually two girls with practically nothing on sitting there, but I only managed to paint one of them. And then that older guy, and a lot of people would come and sit there. It was so lovely. Actually, the thing that first attracted me was that plant toward the back, and I like that palm tree as well. I did it the late afternoon, and there was a certain time when the palm tree suddenly lit up. I also find it very romantic, with those lovely balcony windows.'

Melissa Scott-Miller, 2025

£4,500.00

**MSM227**

Melissa Scott-Miller RBA RP NEAC (born 1959)

The Connaught, from Mount Street Gardens Gate

Signed with initials and dated 25

Oil on canvas

20 x 24 inches (50.75 x 61 cm)

Exhibited

'Melissa's London', Chris Beetles Gallery, London, October 2025

Additional Notes

'Finished this painting yesterday afternoon, a view of the Mount Street Mayfair entrance to Mount Street Gardens with the Connaught Hotel in the background. This little dog seemed to pose for me when I was painting there last Friday!'

Melissa Scott-Miller, September 2025

£4,250.00

**MSM233**

Melissa Scott-Miller RBA RP NEAC (born 1959)

Trinity Church Square, Southwark

Oil on canvas

16 x 20 inches (40.625 x 50.75 cm)

Exhibited

'Melissa's London', Chris Beetles Gallery, London, October 2025

Additional Notes

'This was painted quite a while ago, because it was when I used to teach at the Art Academy, and that's in Southwark. I just wandered around looking for good places to paint, and I found this lovely square. It was summer, and I really loved the statue. There's a church behind it, it's a really lovely place.'

Melissa Scott-Miller, September 2025

£2,750.00



MSM234

Melissa Scott-Miller RBA RP NEAC (born 1959)
Barnsbury Square, Islington

Signed, inscribed with title and dated 2010 on reverse
Oil on canvas
16 x 20 inches (40.625 x 50.75 cm)

Exhibited

'Melissa's London', Chris Beetles Gallery, London, October 2025

Additional Notes

'This is near where I used to live. When I first had [my dog] Joey, I used to take him to this park, where dogs are allowed. Now, even then actually, they used to have almost a club for dog owners and it's a really sociable place. Everybody brings their dogs. I did two or three paintings in this park, but this is just a small one, around September time. I love those orange bits on the trees.'

Melissa Scott-Miller, September 2025

£2,250.00

**MSM237**

Melissa Scott-Miller RBA RP NEAC (born 1959)
Wysteria on an Islington Street Corner

Signed, inscribed with title and dated 2016 on reverse
Oil on canvas
24 x 30 inches (61 x 76.25 cm)

Exhibited

'Melissa's London', Chris Beetles Gallery, London, October 2025

Additional Notes

'This is the house at the end of my road, and I've painted it lots of times because it is really amazing. It had this May tree with pink blossom, and the Wisteria, and the Copper Beech just coming through, but now they have got rid of the May tree...'

Melissa Scott-Miller, September 2025

£3,500.00

**MSM242**

Melissa Scott-Miller RBA RP NEAC (born 1959)
St James's Park, Flower beds

Signed with initials and dated 25
Oil on canvas
20 x 24 inches (50.75 x 61 cm)

Exhibited

'Melissa's London', Chris Beetles Gallery, London, October 2025

Additional Notes

'Finished this painting of St James's Park painted on mostly rainy days, the rain brings out the colours of the flowers and the park is a bit more quiet. I love the incredible flower beds around this time of year in St James's park.'

Melissa Scott-Miller, September 2025

£4,000.00



MSM245

Melissa Scott-Miller RBA RP NEAC (born 1959)

Autumn along the Regent's Canal

Signed with initials and dated 25

Oil on canvas

16 x 31 ½ inches (40.625 x 80 cm)

Exhibited

'Melissa's London', Chris Beetles Gallery, London, October 2025

Additional Notes

'Finished this painting in Maida Vale today. The autumn colours are coming out now and it's been lovely to paint in the sunshine the last few days.'

Melissa Scott-Miller, September 2025

£5,500.00

**MSM249**

Melissa Scott-Miller RBA RP NEAC (born 1959)

The Orangery, Holland Park

Signed with initials and dated 25

Oil on canvas

20 x 24 inches (50.75 x 61 cm)

Additional Notes

'Finished this painting of the wonderful roses still blooming in Holland Park at The Orangery. I only started it on Wednesday with lovely Heatherley's students, but yesterday and today I worked quite a few hours on it as it was the same even still light all day. I'm so inspired by the colours at the moment.'

Melissa Scott-Miller, October 2025

£4,000.00

**MSM255**

Melissa Scott-Miller RBA RP NEAC (born 1959)

The Garden Museum, from St Mary's Gardens

Signed with initials and dated 25

Oil on canvas

23 ½ x 31 ½ inches (59.75 x 80 cm)

Additional Notes

'I've been coming here for a few years, when my daughter and my grandson first moved to this area. From when he was a little baby, I used to bring him here, and he would toddle around this fountain. I used to keep thinking, I would really like to make a painting here. I used to keep visualising how I was going to paint it – I love the fact that you can see the Houses of Parliament and the red brick building of the Archbishop's Palace and the church, like all these different kinds of stone and brick. I knew I wanted to include lots of autumn leaves. The colour of the Plane trees outside the Houses of Parliament looked absolutely fantastic. And then I saw bits of that colour everywhere. I really wanted to do it fast, because I was working in sunny early afternoons, and you got fantastic shadows coming across the buildings.'

Melissa Scott-Miller, December 2025

£5,500.00



MSM256

Melissa Scott-Miller RBA RP NEAC (born 1959)

The Community Garden

Signed with initials and dated 25

Oil on canvas

24 x 30 inches (61 x 76.25 cm)

Additional Notes

'This is the community garden, sometimes called Old Paradise Gardens. They've made it quite recently and put together all these hazel twigs – I really enjoyed painting them. I like the happy welcome sign, and the fact that it wasn't completely in the painting. The angle made a really good composition, like having the fence come towards you. It is kind of welcoming, like hands and fingers holding the garden.

In the distance is the church and that's the tiny bit of the tower, the Archbishop's Tower, which is a lovely orange brick. It was lit up, because it was autumn, and this tree had gone really beautiful colour. I love it, I did it only on sunny afternoons. I was very strict with my time between 1pm and 3pm when the sun was shining. And you saw the sunlight sort of reflect the golden light in these windows of the flats.'

Melissa Scott-Miller, December 2025

£5,000.00

**MSM257**

Melissa Scott-Miller RBA RP NEAC (born 1959)

The Courtyard, Garden Museum

Signed with initials and dated 25

Oil on canvas

19 ½ x 27 ½ inches (49.5 x 69.875 cm)

Additional Notes

'This is the courtyard garden at the Garden Museum and it was one of the first things I saw that I thought would make a really good painting. I love the sort of jungle effect and there's so many good flowers still coming out. And the purple Dahlias are apparently quite a rare thing, and they came out while I was painting it, so I managed to put them in. It was really nice because I even put people sitting in the restaurant and you can see the London buses go past. I think there's a bus stop just there, because I actually did it all from life.

And I really like the way these flats sort of go round – this is a block of flats, new flats, and they're sort of rounded. I just thought it was a really incredible composition. I was glad because I wanted to get a view before all the autumn leaves completely went. I thought it was nice to show these branches and leaves. And there were a few autumn leaves stuck in between the greenery, which looked good. I think the sculpture is something they had specially commissioned. It does look really good, with the colour that the metal has gone.'

Melissa Scott-Miller, December 2025

£4,500.00

**MSM259**

Melissa Scott-Miller RBA RP NEAC (born 1959)

Late Autumn Back Garden 2025

Signed with initials and dated 25

Oil on canvas

47 ¼ x 39 ½ inches (120 x 100.375 cm)

Additional Notes

'A final goodbye to the autumn leaves of 2025, in an Islington back garden view.'

Melissa Scott-Miller, December 2025

£12,500.00



MSM260

Melissa Scott-Miller RBA RP NEAC (born 1959)

The Garden Museum Courtyard, from the Café

Signed with initials and dated 25

Oil on canvas

19 ½ x 28 inches (49.5 x 71.125 cm)

Additional Notes

'My latest painting of the Garden Museum courtyard garden painted in a few sessions next to the lovely café. This is the second one I've done there, this one shows the very interesting tomb of the Tradescants and of Captain William Bligh.'

Melissa Scott-Miller, December 2025

£3,750.00

**MSM261**

Melissa Scott-Miller RBA RP NEAC (born 1959)

Archbishop's Park, Lambeth

Signed with initials and dated 25

Oil on canvas

12 x 31 ½ inches (30.5 x 80 cm)

Additional Notes

'I've been painting a view from the nearby Archbishop's Park on the recent sunny mornings, a favourite park for my lovely grandson Avery...'

Melissa Scott-Miller, December 2025

£2,750.00

**MSM262**

Melissa Scott-Miller RBA RP NEAC (born 1959)

Hyde Park Gardens

Signed with initials and dated 25

Oil on canvas

20 x 24 inches (50.75 x 61 cm)

Additional Notes

'I had painted the view looking in the other direction a couple of years ago and kept looking at the fountain and thinking how could I paint that. Then I brought my Heatherley's class to paint there this autumn and I noticed the beautiful colours of the trees beyond and thought it was a great contrast with the colours of the dry and wet stones.'

I grew up in Kensington and I remember going for walks with my Dad and our spaniels – they always wanted to jump in the ponds in Kensington Gardens. I didn't really visit the Italian gardens and found it very surreal and beautiful when I eventually discovered it, and it seems to be a very popular place.'

Melissa Scott-Miller, 2025

£2,750.00



MSM264

Melissa Scott-Miller RBA RP NEAC (born 1959)

Toward Lambeth Bridge from the Garden Museum

Signed with initials and dated 25

Oil on canvas

15 ½ x 31 ½ inches (39.375 x 80 cm)

Additional Notes

'A work in progress, from the last couple of sunny afternoons. Hopefully if there's more of this lovely light I will finish it in time to be my last painting of 2025, another view from the Garden Museum.'

Melissa Scott-Miller, December 2025

£5,500.00

